

SECTION 3: COMPLETE EVALUATION REQUIREMENTS

LEVEL 1

TECHNICAL REQUIREMENTS

Students must prepare all the listed elements for their instrument on the level they are enrolled. Memorization is required. Elements may be played in any order.

THEORY REQUIREMENTS

The student should be able to write and recognize all elements of music in every category.

TONALITY

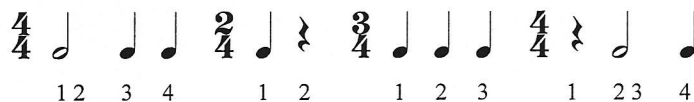
1. Staff notes with proper stem direction.
2. Distinguish between whole steps and half steps on the staff.
3. Scales and key signatures in Major: C, G, D, F, B \flat
4. Tonic triads/arpeggios in root position in Major: C, G, D, F, B \flat

TIME AND RHYTHM

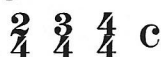
The student should be able to:

- identify notes and rests with their names
- give the number of beats each note will receive
- write counts using numbers
- match notes and rests of the same value
- notate bar lines in the correct position

Rhythms such as:



1. Time Signatures:



2. Note and rest values:



TERMS AND SIGNS (Definitions are on page 225)

<i>p</i> piano		bar line
<i>mp</i> mezzo piano		<i>fine</i>
<i>mf</i> mezzo forte		double bar line
<i>f</i> forte		repeat sign
		measure
		treble clef (for treble clef instruments)
		bass clef (for bass clef instruments)
<i>legato</i>		staff

TERMS AND SIGNS (cont.)

- | | | |
|---|---|----------------|
| <i>Adagio</i> |  | <i>fermata</i> |
| <i>Allegro</i> | | dynamics |
|  natural |  | sharp |
|  flat | | accidental |

INSTRUMENTAL KNOWLEDGE REQUIREMENTS

The student should be able to identify his or her instrument and know the key of the instrument:

Instrument	Key of Instrument
Flute	Key of C
Clarinet	Key of B \flat
Oboe	Key of C
Alto Saxophone	Key of E \flat
Bassoon	Key of C
Trumpet	Key of B \flat
French Horn	Key of F
Trombone	Key of C
Euphonium	Key of C

EAR-TRAINING REQUIREMENTS

1. Identify Major and Natural Minor scales
2. Identify whole steps and half steps
3. Intonation
4. Rhythmic Patterns
5. Like and unlike phrases

SIGHT-READING REQUIREMENTS

The test material will only use quarter, half, dotted half, or whole notes and rests, and may include *staccato*, *slurs*, and dynamics.

IMPROVISATION REQUIREMENTS (Optional)

Any improvisation assignment from the Improvisation source list may be played during the performance portion of the evaluation. The improvisation should last between 5-30 seconds in length.

REPERTOIRE REQUIREMENT

Number of pieces – two; Memorization is optional. Pieces must be from different musical periods and of contrasting styles. One piece from the Level 1 Repertoire List is required for CM evaluations. The second piece must be at least a level 1 piece or higher, but does not need to be from the syllabus Repertoire Lists.